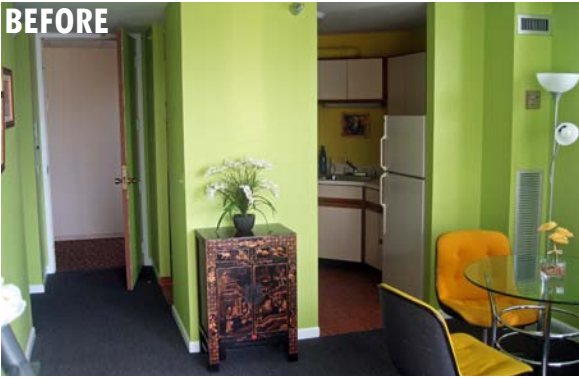


BEFORE



**PARK PLAZA
 KITCHEN**

- SOPHISTICATED OPEN PLAN DESIGN
- ABUNDANT NATURAL LIGHT
- ENHANCED SOCIAL INTERACTION
- LOWER UPPER CABINETS FOR EASE OF REACH
- SUSTAINABLE MATERIALS FOR CABINETS, COUNTERTOPS AND FLOORING
- ENERGY EFFICIENT APPLIANCES AND LIGHTING
- INTEGRATED CURRENT ACCESSIBILITY REQUIREMENTS INTO THE RE-DESIGN

AFTER



AFTER



**PARK PLAZA
 BATHROOM**

- LUXURIOUS SPA LIKE FEEL
- BATH TUBS UPGRADED TO FULLY ACCESSIBLE SHOWERS
- LOW SLIP, 24X24 TILE FLOOR FOR ADDED SAFETY
- USE OF SUSTAINABLE MATERIALS
- LOW FLOW FAUCET, SHOWER HEAD AND DUAL FLUSH TOILET
- ENERGY EFFICIENT LIGHTING
- INTEGRATED GRAB BARS AND EMERGENCY CALL BUTTON



BEFORE

Today's seniors are looking for residential options which can match their active lifestyle and provide the level of luxury and sophistication they have become accustomed to. Many existing facilities were designed with an institutional feel which is not conducive to the requested modern senior lifestyle. Upgrades to kitchens and bathrooms can address this in ways which can make a significant impact at a reasonable cost.

HOWARD HIRSCH AIA, LEED AP
 PRESIDENT

E: hirsch@hirschassociates.com
 T: 312.836.0011 x136

THOMAS J. KANE AIA, LEED AP
 VICE PRESIDENT

E: tkane@hirschassociates.com
 T: 312.836.0011 x135