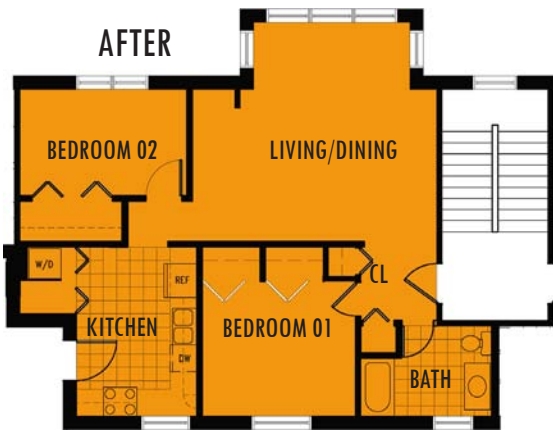
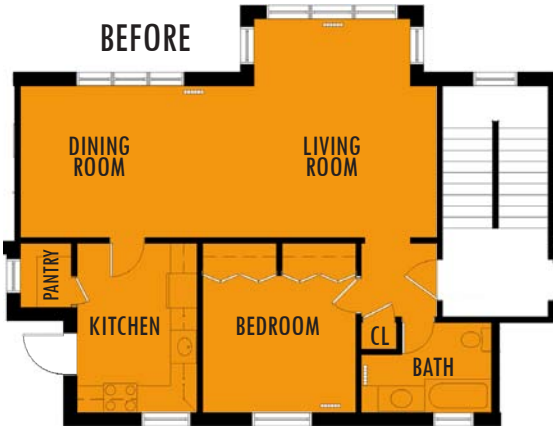


REPRESENTATIVE UNIT CONVERSION PLANS:

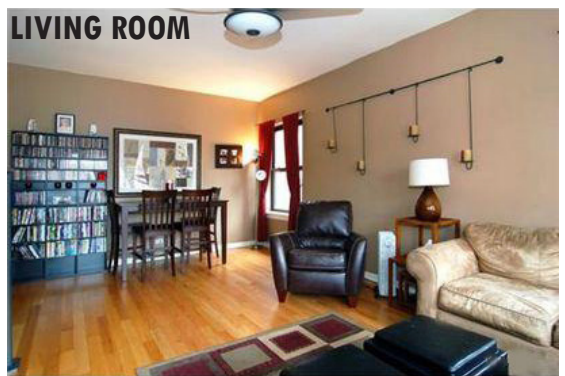
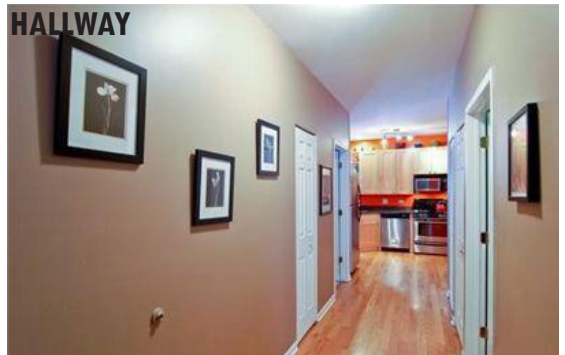


In order to your increase property marketability and value, the following improvements were made:

1. Installation of energy efficient lighting and electrical fixtures. (Ceiling fan, etc.)
2. Upgrade and installation of kitchen cabinets and appliances. (Including dishwasher, sink, and range)
3. Installation of new washer and dryer.
4. Upgrades to finishes, including walls and floors.
5. Replaced existing closet and room doors.
6. Added air conditioning systems.
7. Conversion of large dining space to dining and an additional second bedroom.
8. Upgrades to bathroom fixtures. (Sink, tub, water closet, etc.)
9. Replacement of existing windows with new energy saving models.

A local developer purchased three vintage apartment buildings in the Rogers' Park neighborhood of Chicago. These buildings had never been upgraded and did not have the layouts, systems, and amenities required for a successful condominium conversion. Hirsch Associates measured and drew each individual units plan and developed design options for the required improvements needed per unit, salvaging as much of the existing as possible. This blending of new with the old provided for a cost effective renovation, a fresh look to the dated buildings, and the successful conversion from rental to for-sale units.

REPRESENTATIVE UNIT CONVERSION IMAGES:



HOWARD HIRSCH AIA, LEED AP PRESIDENT
E: hhirsch@hirschassociates.com
T: 312.836.0011 x136

THOMAS J. KANE AIA, LEED AP VICE PRESIDENT
E: tkane@hirschassociates.com
T: 312.836.0011 x135